

- CONTENT DETECTION
- RATING ANALYSIS
- MEDIA MONITORING
- COMPLIANCE RECORDING

ABOUT

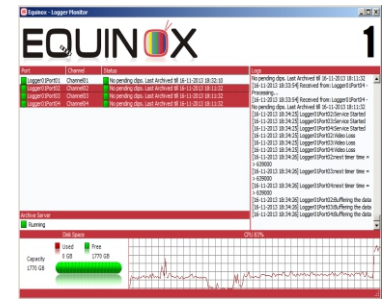
Equinox Media Monitoring is a full featured media recording and retrieval system for TV and Radio content. It can take multiple kinds of input and record it in internal or external storage. Having many powerful add-on modules like Content Detection, Multi-viewer and Ratings Analyser, Equinox is being used in almost every department of a media company, as listed in the Use-cases below.

- COMPLIANCE RECORDING
- CONTENT DETECTION
- INGESTING
- MEDIA MONITORING
- RATINGS ANALYSIS
- VIDEO CAPTURE
- VIDEO STREAMING
- MEDIA ARCHIVING

USAGE

COMPLIANCE

- 24 x 7 x 365 days continuous recording or time scheduling
- Fault detection with SNMP Traps, & Email reporting
- Unique Cloning backup feature
- Supports recording of TS in it's original format (Native) to monitor
- Capable of recording TS apart from low-resolution clips
- It Supports MPTS/SPTS Streams with Real Time Stamp
- Auto-recovers from fault conditions, like stream loss, PID loss etc.
- Date and Time stamping on clips
- Auto purge clips on FIFO basis
- Simultaneous recording in different rates/format/resolutions

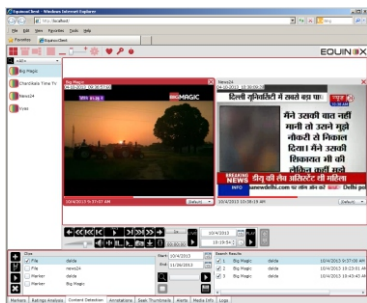


- Create and Share custom Markers
- Search on Channel, Date Time & Metadata/description/ formats/bitrate
- Allows browsing with forward/rewind from 0.5X to 32X
- Allows navigation on user selectable period thumbnails
- Export content to any format (H.264, Mov, Flv, 3gp, Wmv, DVD etc.)
- Flag ranges to prevent auto-deletion of important content
- Live annotations entry & view
- Simultaneous browsing of multiple live/recorded channels

MEDIA MONITORING

RATINGS ANALYZER

- Integration of Ratings based on a single format
- Supports unlimited number of demographic groups
- Facility to add new demographics on the fly
- Support comparison of multiple channels for a specific time
- Allows Zoom in/out on for a more detailed view
- Option to save a snapshot of the Ratings graph



- Allows search on all content
- Facility to mark portions of captured video, or import external clips to be searched
- User selectable criteria allows flexible searches
- Extremely fast search engine, gives results within seconds
- Customizable report with facility to export

CONTENT DETECTION

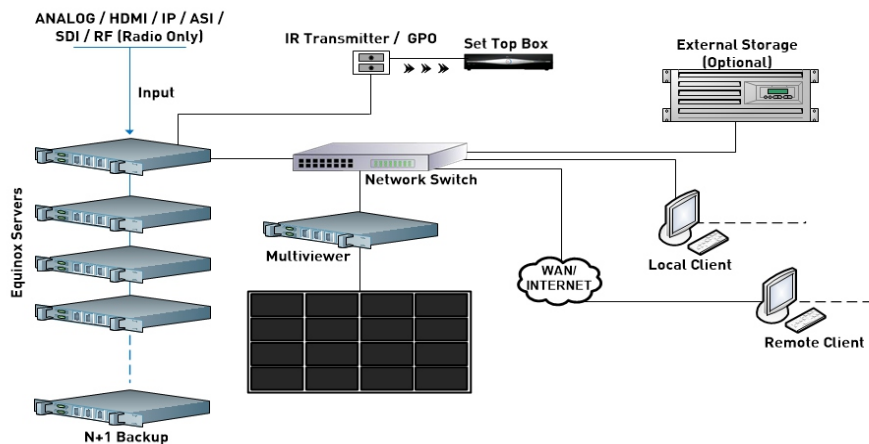


MULTIVIEWER

- Multi-viewer to monitor Live channels
- Live alerts with each channel with visual indications
- Real-time audio level indicators
- Supports custom layouts
- Monitors CPU load and free Disk space

FEATURES

- Live Cloning for seamless backup
- Ratings Analyzer - Compare Multiple Channels visually
- Loudness monitoring as per ITU/EBU standards
- Frame-detection allows detection of custom static frames
- System Health Management with email alerts
- Audio/Video Loss, Video Freeze/Black detection and alert
- Enhanced alert management. Allows export of fault clips
- Automatically imports EPG
- Supports DVB-Subtitle, Close Caption, DPI SCTE-35
- Supports BISS-1, BISS-E Encryption
- Archive to external SAN/NAS
- Flexible video and audio bit rates
- Multi-Viewer to monitor live channels
- Content Search on Audio & Video
- Generates SNMP Traps for all alerts
- Client interface works on all major browsers
- Remote STB Control IR/GPO
- Integrated with various third-party services
- User Selectable Service No, PIDs Selection for TS Recording



WORKFLOW

TECHNICAL SPECS.

	Analog	SDI / HDMI	IP / ASI
Video	SD - PAL, NTSC	HD/SD - SMPTE (292M, 259M, 296M, 372M, 425M level A, 425M level B, 435)	MPEG2, MPEG4, H.264, HEVC
Audio	8-bit and 16-bit mono or stereo 8 kHz to 48kHz	Embedded Up-to 16 tracks	MPEG1 Layer II, HE/LC, AAC, Ac3 (Dolby E, Dolby Digital Up to 5.1) Up-to 16 tracks
Configuration	1, 4, 8, 16 Channels per server	SD - 1, 4, 8, 16 Channels per server HD - 1, 4, 8 Channels per server	Up-to 30 Channels per server

Recording Rates
Video -128kbps to 10mbps/Audio - 8kbps to 640kbps

Form Factor
1U Server class system

Media Storage
90 Days or as per requirement in RAID 0, 1, 3, 5, 6

Power Supply
570W AC power supply (Single or Dual Redundant)

Mounting Rails
Extendable 25" to 33.25"

AC Voltage
100 - 240V, 50-60 Hz, 7 - 3Amp

Temperature
Operating 10 - 35° C
Non-operating -40 - +70° C

Dimensions
W x H x D: 17.2" x 1.7" x 19.8"

Gross Weight
16.3 Kg (32 lbs)

Humidity
Operating 8 - 90% non-condensing
Non-operating 5 - 95% non-condensing